

IMPORTANT

HEALTH, SAFETY & ENVIRONMENTAL INFORMATION

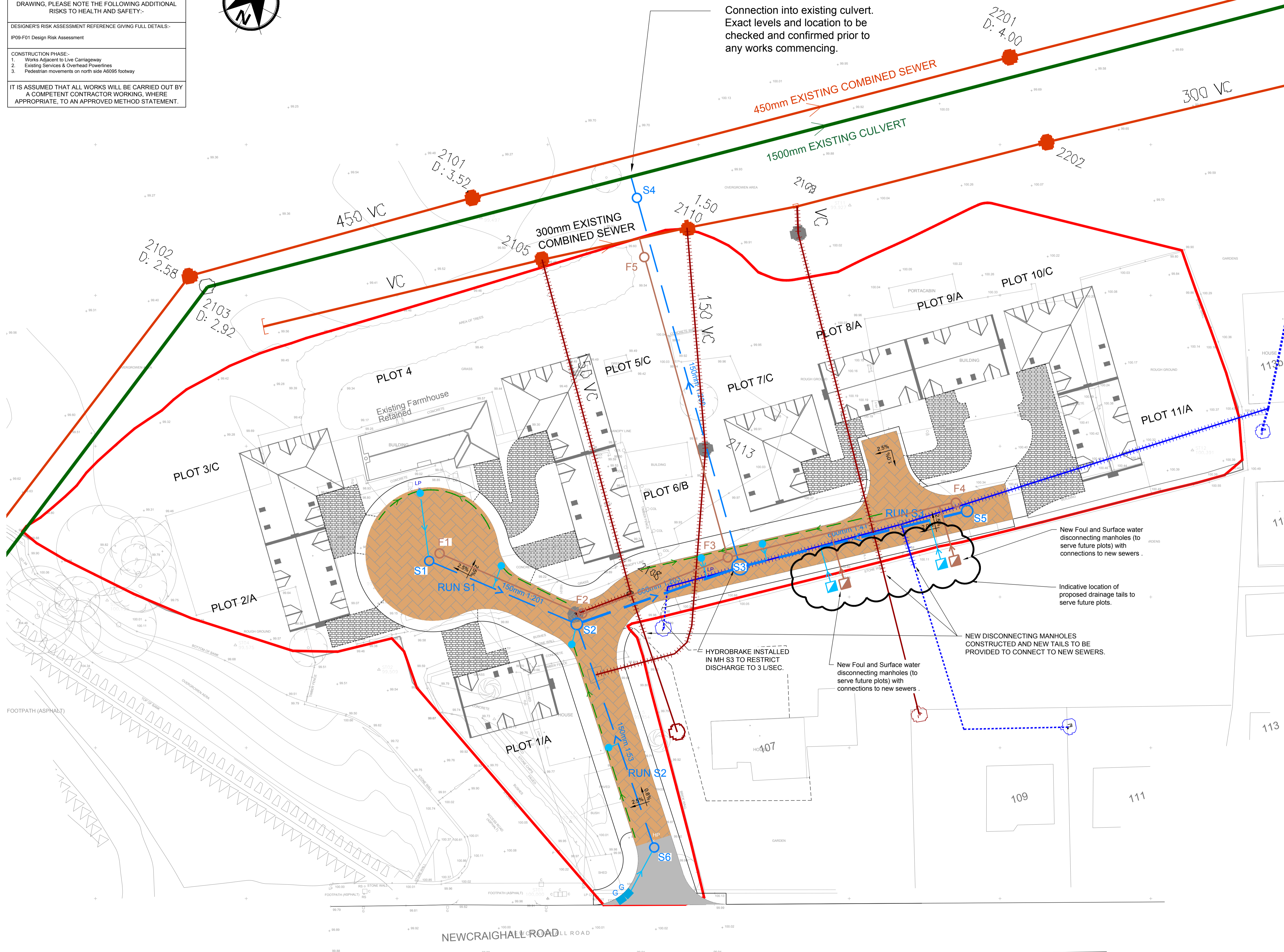
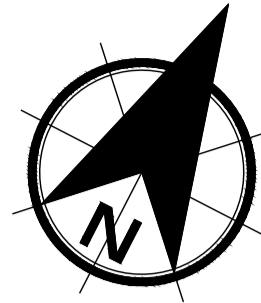
IN ADDITION TO THE HAZARDS AND RISKS NORMALLY ASSOCIATED WITH THE TYPE OF WORK DETAILED ON THIS DRAWING, PLEASE NOTE THE FOLLOWING ADDITIONAL RISKS TO HEALTH AND SAFETY:-

DESIGNER'S RISK ASSESSMENT REFERENCE GIVING FULL DETAILS:-
IP09-F01 Design Risk Assessment

CONSTRUCTION PHASE:-

1. Works Adjacent to Live Carriageway
2. Existing Services & Overhead Powerlines
3. Pedestrian movements on north side A6095 footway

IT IS ASSUMED THAT ALL WORKS WILL BE CARRIED OUT BY A COMPETENT CONTRACTOR WORKING, WHERE APPROPRIATE, TO AN APPROVED METHOD STATEMENT.



NOTES

1. 150mm, 225mm & 300mm diameter sewers to be:-
PVC Structured Wall Gravity Sewer Pipes with manufacturer's flexible joints and comply with the relevant provisions of BS4600 and BS EN1401-1 (Stiffness Classification SN8) and WIS 4-35-01 or, Vitrified Clay Pipes with manufacturer's flexible joints and comply with the relevant requirements of BS EN 295 and BS 65 (surface water pipes only).
2. Sewer diameters greater than 450mm to be concrete with manufacturer's flexible joints and comply with the relevant provisions of BS 5911
3. Sewerage installation works to be carried out in accordance with "Sewers for Scotland 3".
4. Tree planting adjacent to sewers to be restricted in accordance with Appendix VII of "Sewers for Scotland 3".
5. The Surface Water Drainage Shown Provides 1 Level of Treatment as well as attenuation (1,200 year event).
6. Overland flow routes to be confirmed by developer at detailed site application design stages.
7. discharge attenuated to 3.0 l/s.
8. All works to be confirmed by SWCEC Technical Approval.
9. Contractor to confirm actual invert level of existing culvert at outlet prior to commencing any drainage works.
10. Contractor to notify Scottish Water prior to commencing any drainage works.
11. Contractor to obtain all necessary statutory permits & consents for works in adopted roads.
12. Driveways to be porous block paving.

LEGEND

- SITE BOUNDARY
- FOUL WATER SEWER
- FOUL WATER SEWER MANHOLE
- SURFACE WATER SEWER
- SURFACE WATER SEWER MANHOLE
- DRAINAGE TAILS
- SILT TRAP MANHOLE
- GULLY LOCATION
- PERFORATED PIPE
- PROPOSED FINISHED GROUND PROFILE
- EXISTING GROUND PROFILE
- - - EXISTING FOUL SEWER TO BE ABANDONED
- - - EXISTING SURFACE WATER SEWER TO BE ABANDONED
- EXISTING MANHOLES TO BE DEMOLISHED/REMOVED
- POROUS PAVIOR SURFACE
- PROPOSED FOUL WATER DISCONNECTING MANHOLE (FINAL LOCATION TO BE AGREED)
- PROPOSED SURFACE WATER DISCONNECTING MANHOLE (FINAL LOCATION TO BE AGREED)

Rev.	Date	Amendment Details	Drawn	Chk'd	App'd
0	16/04/18	First Issue	JL	AM	AM

This drawing should not be relied on or used in circumstances other than those for which it was originally prepared and for which Sweco UK Limited was commissioned. Sweco UK Limited accepts no responsibility for this drawing to any party other than the person by whom it was commissioned. Any party which breaches the provisions of this disclaimer shall indemnify Sweco UK Limited for all loss or damage arising therefrom.

Sweco UK Limited
Sweco 2nd Floor Quay 2
139 Fountainbridge
Edinburgh
EH3 9QG
Tel: +44 (0)131 550 6300
Web: www.sweco.co.uk

Client
THE TRUSTEES of Sir C. M. Dalrymple

Drawing Status
RCC

Project Title
WANTON WALLS NEWCRAIGHALL EDINBURGH

Drawing Title
SURFACE WATER DRAINAGE LAYOUT

Scale	Designed	Drawn	Checked	Approved
1:250	JL	JL	AM	
Original Size	Date	Date	Date	Date
A1	13/06/17	13/06/17	13/07/17	
Drawing Number				Revision
RCC-0500-001				B